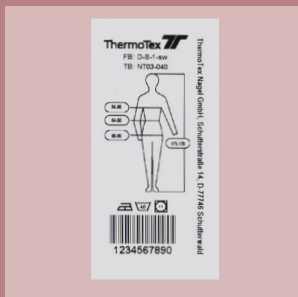
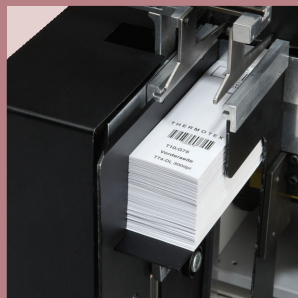




## Now with the software WinTexx 2 Pro!

- For a simple and fast creation of textile labels
- Simple installation
- Windows Vista® compatible
- Database manager
- All current barcodes presentable
- With a large range of design tools and pre-installed symbols



## TT4-S

*The TT4-S is a professional printer for highest demands. The compact system offers extensive features, very fast working speed and excellent printing quality with a resolution of 300 dpi. In addition, TT4-S can also be integrated in your existing IT systems in many different ways.*

- High-powered transfer printer with special heating system with 300 dpi
- Large illuminated LCD display for 4 lines with approx. 20 characters each
- Navigator pad with functional adjustment of the button configuration
- For continuous tapes or separated labels, CT tapes, nylon-taffeta tapes, polyester-satin tapes, fix-plastic film and paper labels
- High-performance cutter
- Internal fonts and barcodes can be retrieved
- Label design with WinTexx and realistic reproduction
- 32 bit Coldfire processor / 266 MHz with 64 MB main memory
- Interfaces: serial, USB, Ethernet 10/100 Mbit
- USB master for keyboard / scanner
- Integrated real-time clock
- Sensor for light-permeable media and bottom reflex sensor
- Practical label collection unit

Minimum system requirements: hard disk min. 130 MB free memory; main memory min. 32 MB RAM; CD ROM drive, VGA graphic monitor; operating system Windows 95, 98, ME, NT 4, XP

### Option

- Perforation cutter
- RFID write/read module
- Parallel interface, WLAN card
- Network interface Twinax/Coax converter for IBM connection
- External rewriter (without cutter)
- Extended memory CompactFlash T1
- Label stacker
- Various light barriers for label transport

### Technical data:

100 – 240 V, 50 – 60 Hz, 250 W  
 W x H x D: 242 x 274 x 446 mm  
 Weight: 9 kg  
 Printing width: max. 105.6 mm  
 Printing speed: max. 250 mm/s  
 Resolution: 300 dpi  
 Label width: 4 – 116 mm  
 Label length: 5 – 2,000 mm

Art. No. 15456





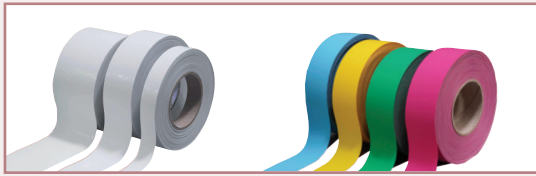
# Supplies and accessories

Marking tapes and ink ribbons by ThermoTex help you to produce labels with very good printing quality and highest **washing resistance\***. We offer specially coordinated combinations for differing requirements. Make your choice from our wide range of materials and supplies. All tapes are supplied on a roll and are available in different widths.



**All variants of CT- and PS-tapes are Oeko-Tex® Standard 100 certified!**

## CT tapes



This marking tape is available in differing qualities and also in colour. It is ideal particularly for printing labels to mark names in clothing, and is also ideal for printing barcodes. Extremely easy to heat-seal on textiles! Not suitable for flatwork!

## Polyester-satin tapes



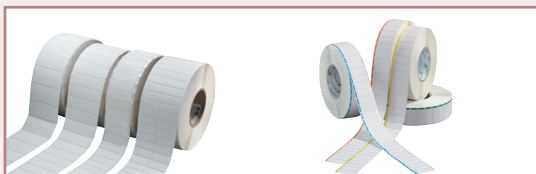
Polyester-satin tapes are used to produce colourfast care labels. They are sewn in subsequently. Polyester-satin tape is available in qualities PS05 (standard, very soft), PS06 (reinforced material) and PS08 (with selvedge and for printing on both sides).

## Nylon-taffeta tapes



Nylon-taffeta tapes are ideal particularly for producing colourfast care labels and are sewn in subsequently. Nylon-taffeta tape is available in qualities NT01 (with smooth surface), NT02 (with coarser surface, NT03 (with smooth surface) and NT08 (with very smooth surface).

## die-cut and Fixtexx labels



The labels based on ThermoTex CT tape are supplied die-cut on a roll. Various formats and variations permit great flexibility even for die-cut labels. The labels are processed quickly and conveniently, and are easily heat-sealed. Die-cut labels are also available in the self-adhesive version Fixtexx: they can be pre-fixed before heat-sealing for maximum precision.

## Ink ribbons



Optimum printing results depend essentially on using the specially coordinated combinations of ThermoTex marking tapes and ink ribbons. Coloured ink ribbons for one-colour printing are available in black, blue, red and green.

## Other accessories

<b>Cleaning kit for printing systems</b>	<b>Label collection unit</b>	<b>Printer lead</b>
Art. No.	Type of machine	Art. No.
50393	For TT1, TT3-S, TT3-L, TT4	13055
		15527 (Adapter for parallel interfaces / TT4-S)
		14393 (serial)
		14224 (USB)

ThermoTex gladly assumes the task of servicing and cleaning your machines.

\* **The washing resistance should undergo additional testing with your own washing methods (see ThermoTex General Terms and Conditions, No. 16)!**



**ThermoTex Nagel GmbH**  
Schutterstraße 14 | 77746 Schutterwald | DEUTSCHLAND  
Phone +49 (0)781-96 16-0 | Fax +49 (0)781- 96 16-50  
info@thermo-tex.de | [www.thermo-tex.de](http://www.thermo-tex.de)

**ThermoTex Europe AG** Head office: Grabenstrasse 25 | 6340 Baar | SCHWEIZ  
Branch office: Langenhagstrasse 13 | 4147 Aesch | SCHWEIZ  
Phone +41 (0)61-751 91 00 | Fax +41 (0)61-751 91 01  
info@thermo-tex.ch | [www.thermo-tex.ch](http://www.thermo-tex.ch)